



Approaching the Tornado

*From early adopters towards
volume deployment*

November 2025 Investor Presentation

Annual General Meeting of Shareholders 2025





Industry and Corporate Update

Dadi Perlmutter, Chairman



Did you Know? Some Facts about Semiconductors

More transistors than cells in the human body

All fabs combined make >2.7 quadrillion transistors daily, more than the 37 trillion cells in a body

Transistors are incredibly small

2nm transistor is ~12–15nm wide; you could fit 5,000 transistors across the width of a single human hair

Most expensive factories on Earth

New TSMC 1.4nm fab in Taichung, Taiwan will cost \$49 billion USD to build, more than three aircraft carriers combined

Cleaner than operating rooms

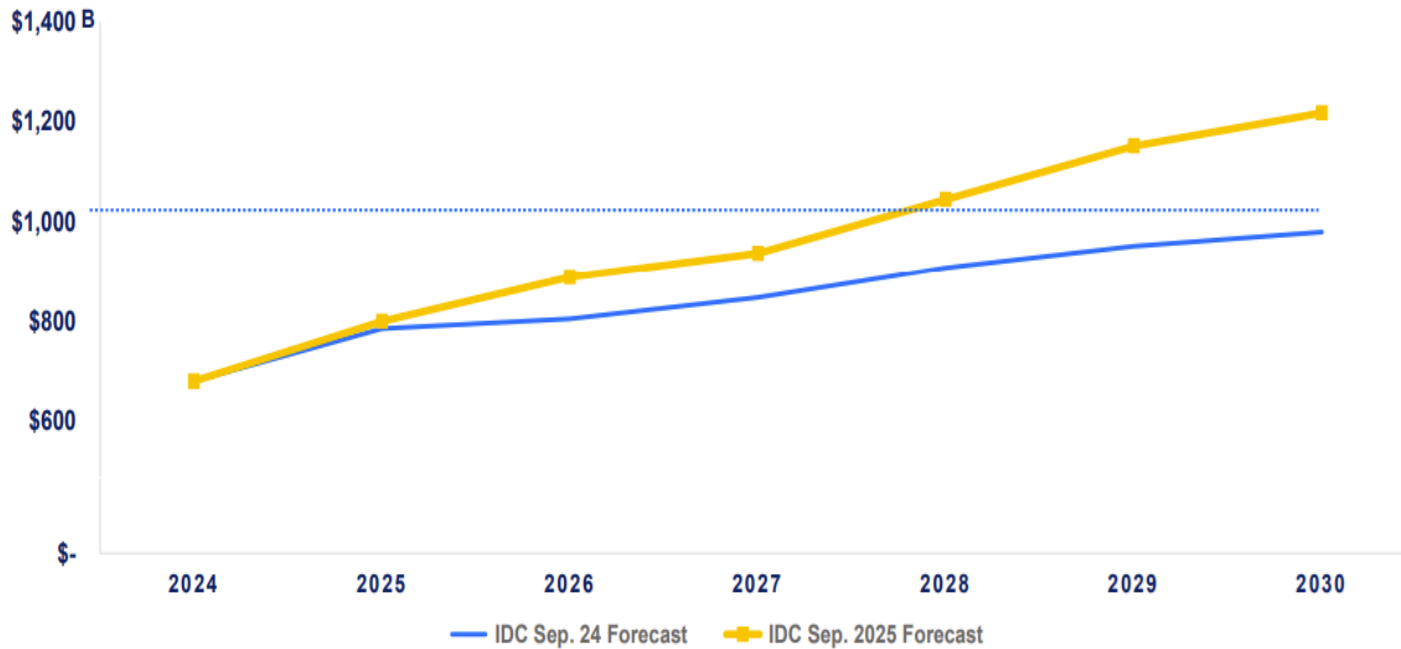
An advanced fab is 10,000× cleaner than a hospital surgery room; a single dust particle can destroy millions of transistors

Powering the global economy

37% of global GDP depends directly on chips and the systems they enable

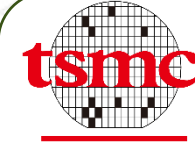
Semiconductors: A Snapshot

AI Supercycle Accelerates \$1T Semiconductor Revenues Earlier Than Expected (~2 years)



Source: IDC CY2Q25 Semiconductor Application Forecast, Sep. 2025

05/01/25
Source: Company Filings, IDC Estimates



TSMC Intends to Expand Its Investment in the United States to US\$165 Billion to Power the Future of AI

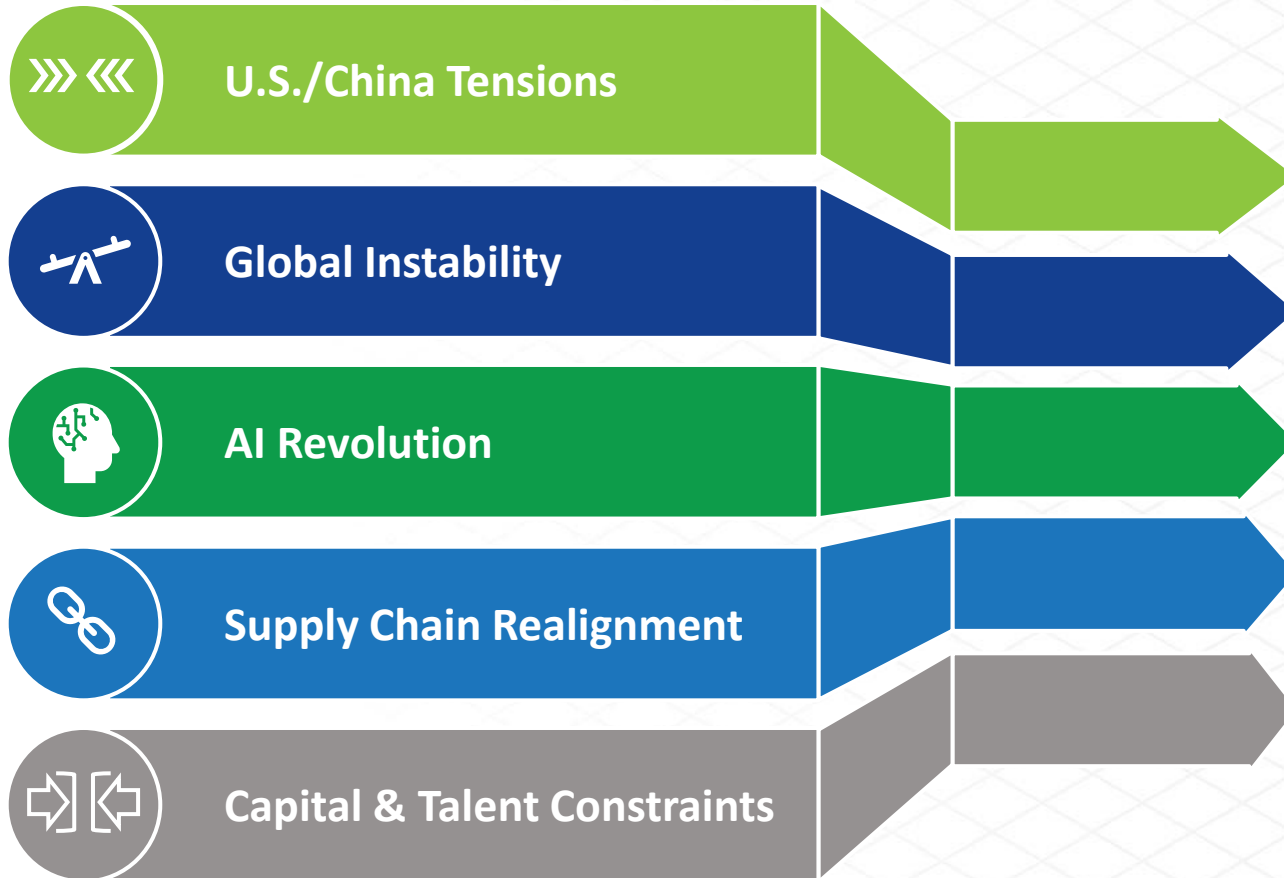


Nvidia to invest \$5bn in Intel after Trump administration's 10% stake



India is betting \$18 billion to build a chip powerhouse.

Impact of Geopolitical Tensions on Semiconductors



| Impact of Geopolitical Tensions on Semiconductors



Strong and Experienced Board and Management Team

Coby Hanoch
CEO



David (Dadi) Perlmutter
CHAIRMAN



Anne Templeman-Jones
DEPUTY CHAIR



Atiq Raza
NON-EXEC. DIRECTOR



Yoav Nissan-Cohen
NON-EXEC. DIRECTOR



Naomi Simson
NON-EXEC. DIRECTOR



Ashley Krongold
NON-EXEC. DIRECTOR



Alla Felder
CFO



Ishai Naveh
CTO



Ilan Sever
VP R&D



Lilach Zinger
VP CUSTOMER SUCCESS



Issachar Ohana
CRO



Eran Briman
VP MARKETING & BUSINESS DEV.



Governance Update

Preparing to be an ASX 200 Company

Policy & Compliance

Upgrading internal governance policies and frameworks



Sustainability & ESG

Launched ESG reporting and disclosure initiatives

Risk & Resilience

Business Continuity and Disaster Recovery planning including Enterprise Risk Assessment (ERA)



Board Leadership

Australia-based Anne Templeman-Jones appointed Deputy Chair to strengthen local representation/oversight



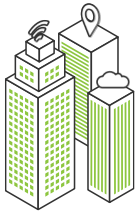
Business Overview

Coby Hanoch, CEO



Weebit Overview: Leading Vendor of ReRAM IP

Advanced Non-Volatile Memory (NVM) Now Entering Production



Founded: 2015

Located: Israel, France & US
60 employees (~90% engineers/scientists; 17 PhDs)



Multiple commercial deals

Including tier-1 IDM onsemi;
ongoing discussions/evals with >20 foundries/IDMs/product companies



Business model

IP licensing to semiconductor companies & fabs



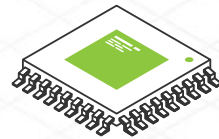
Fast-growing markets

Edge AI, automotive, microcontrollers, power management/analog ICs...



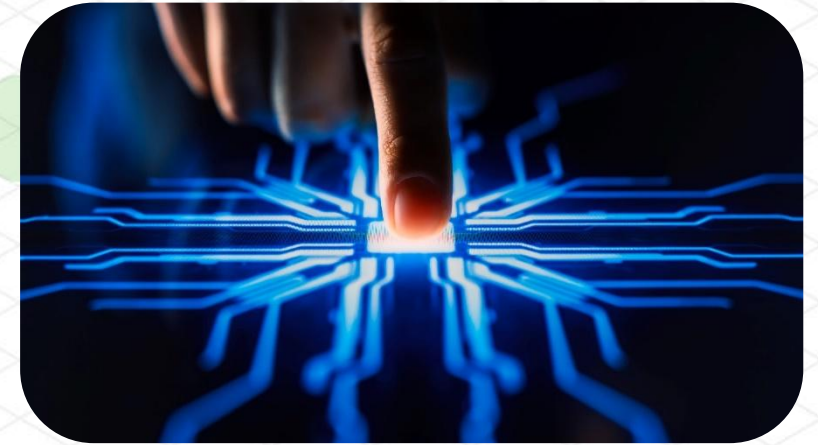
R&D partner

CEA-Leti, a leading microelectronics research institute



Proven, protected technology

Fully qualified per JEDEC & AEC-Q100 standards; available for chip designers; >90 patents/applications



ASX: WBT

S&P/ASX 300

MSCI
Global Small Cap Index

Embedded Non-Volatile Memory (NVM) is Strategic IP



Ubiquitous across Growing Applications

- AI, IoT, automotive, industrial, medical, consumer, defense
- Enables device intelligence, security, and resilience



Foundational to Modern Electronics

- Critical for:
- Firmware and code storage
 - AI weights and data tables
 - Configuration data and ID keys
 - Data logging



Drives Differentiation

- Performance: faster operation, better endurance
- Power consumption: Both run-time and sleep power
- System integration: Enabling single-chip solutions
- Secured: Prevent chip hacking



Strategic across the Supply Chain

- Designers: simplify architecture; reduce BOM
- Foundries: added value vs. competition
- OEMs: smarter, more secure products
- Ecosystem: differentiate and monetize IP

A Brief History of Non-Volatile Memory (NVM)

~2010

Flash Scaling Issues
Known

Alternatives Emerge

~2020

Choices Narrow

2024

Superior
Tech Wins

Today

ReRAM is Chosen
Flash Replacement



Microelectronic Engineering
Volume 86, Issue 3, March 2009, Pages 283-286



Future challenges of flash memory
technologies



The Memory Guy Blog

Jim Handy, Objective Analysis, on Semiconductor Memories

Home About Jim Handy Privacy Policy

Month: June 2012

The End of Flash Scaling

FeRAM

MRAM

CBRAM

ReRAM

PCM

3Dxpoint

Optane

Too expensive
Difficult to implement
Exotic materials

MRAM

Mass
Production

ReRAM

Multiple
Companies
Developing

MRAM

Magnetic
Issues

ReRAM

In Production;
Vendors
Shake Out

TSMC redirects its
roadmap from MRAM
to ReRAM



Weebitnano
THE NEXT NVM IS HERE

The only
independent
ReRAM
supplier

ReRAM – Innovative NVM for a New Era



Weebit ReRAM

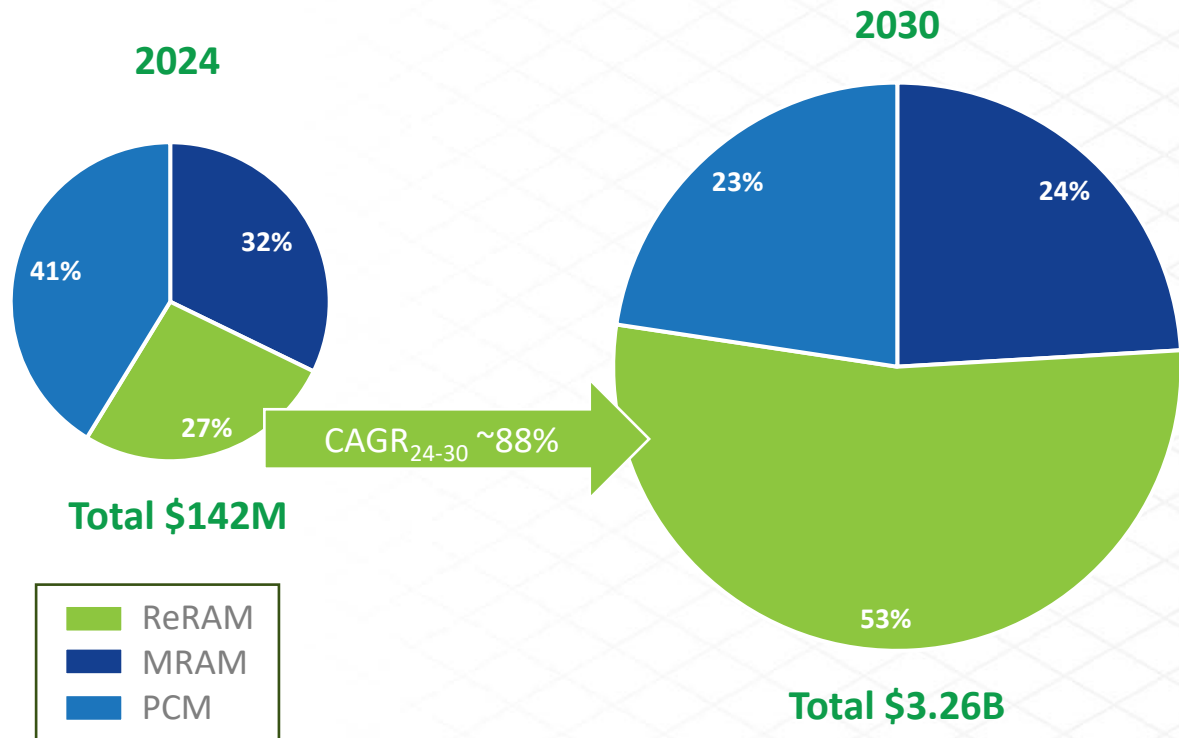
- ❖ Scales to advanced geometries where flash can't
- ❖ Ultra-low power
- ❖ Cost-effective
- ❖ Easy to integrate
- ❖ Highly reliable even at high temperatures
- ❖ Immune to EMI and radiation
- ❖ Fully qualified per JEDEC and AEC-Q100 standards
- ❖ >90 patents/applications

Weebit: The only independent provider of qualified ReRAM

The Rise of ReRAM

45x growth in 6 years

Embedded Emerging NVM Market (in \$M)



Embedded ReRAM Market Volume (# of Dies, in M units)



Note: The embedded emerging NVM market size is evaluated based on assumptions of the average chip area occupied by a given memory technology (Yole)



Recent Achievements



Recent Highlights



MAR 2025

Completed AEC-Q100 150°C operation qualification for automotive



AUG 2025

Achieved record revenue in FY25, an increase of 4X compared to the prior corresponding period

onsemi

SEP 2025

Taped-out first embedded module with Weebit ReRAM at onsemi's 300mm production fab



OCT 2025

Q1 FY26: record quarterly customer payments
Strong balance sheet with >A\$90 million cash at bank at end of quarter



OCT 2025

Achieved target of three product customers integrating Weebit ReRAM in next-generation products

Tape-out of Embedded ReRAM Test Chips at onsemi

Marks major milestone in completing technology transfer of Weebit ReRAM to onsemi's advanced BCD process



onsemi provides intelligent power and sensing solutions with a focus on automotive and industrial

500

Fortune 500®
company
S&P 500® index

#2

Global position in
silicon power
solutions

100

Nasdaq 100®
company

\$7.1B

2024 revenue
(USD)

onsemi was spun out of Motorola as ON Semiconductor in 1999

onsemi data from the onsemi Quarterly Investor Presentation Fourth Quarter 2024

- ❖ ReRAM being integrated into **onsemi's Treo™ platform**
 - ◆ Combines power management, compute & sensing on a single die
 - ◆ Ideal for high-temp automotive, industrial & data-center
 - ◆ Manufacturing 65nm BCD in a 300mm US production fab
 - ◆ Brings **more intelligence** to a range of onsemi's products
 - ◆ Provides **power-efficiency and cost-effectiveness**
- ❖ Collaboration progressing rapidly
 - ◆ Validated Weebit ReRAM on multiple wafer lots, demonstrating **solid performance and reliability**
 - ◆ Test chips will be used for final testing and qualification ahead of anticipated volume production
 - ◆ **Qualification expected in 2026**

**IDMs manufacture their own products,
shortening time-to-production and potentially
accelerating time-to-royalties**

Weebit ReRAM in Automotive

Increasing number of semiconductors per car

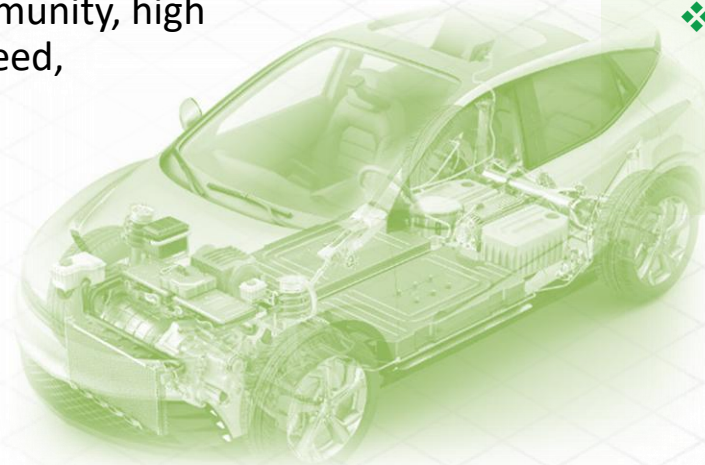
- ❖ ~1,000 - 3,000 chips per car; an electric Audi or Volkswagen contain up to 8,000 chips*

Automotive in need of new NVM technologies

- ❖ Growing needs for emerging NVM: code storage, trimming, data logging...
- ❖ Can effectively scale to advanced process nodes, <28nm

Parameters of Weebit ReRAM align with automaker specifications

- ❖ High-temp reliability, EMI immunity, high endurance, fast switching speed, longevity, secured



Completed AEC-Q100 150°C Operation Qualification

Key to getting designed into automotive MCUs & other components

- ❖ Demonstrated **stability at 150°C operation for up to 100K endurance cycles****
- ❖ Including cycling and post-cycling high-temp data retention

Beyond Automotive

- ❖ Many **industrial** and **IoT** applications require high-temp and extended endurance
- ❖ With AEC-Q100 Weebit can service over 99% of applications

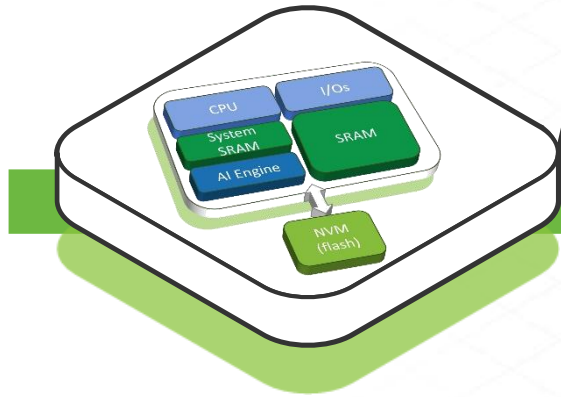
Completed qual in SkyWater S130 using module with 1T1R cell architecture

* <https://www.audi-mediacycenter.com/en/press-releases/semiconductors-are-becoming-the-neurons-of-our-cars-16053>

** Flash equivalent

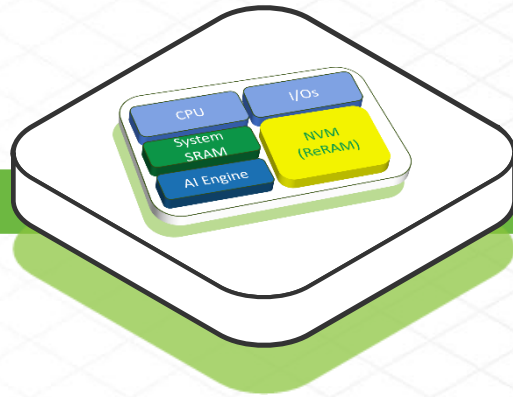
The Journey to New AI Architectures with ReRAM

TODAY'S TWO CHIP SOLUTION



- NVM (flash) on separate chip
- Wasteful in terms of size & cost
 - Prohibitive power
 - Constrained data bandwidth and performance
 - Insecure, vulnerable to hacking

SINGLE CHIP NEAR-MEMORY COMPUTE



- External NVM eliminated
- Eliminates most data movements → Low-power
 - More efficient storage: **4X greater capacity** than SRAM

IN-MEMORY COMPUTE WITH ReRAM



- Computation performed *within* memory arrays
- **Completely eliminates** data traffic → Ultra-low power
 - Enables **Analog Compute** → Store larger models efficiently

NEUROMORPHIC COMPUTE WITH ReRAM

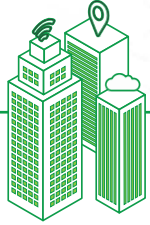


- Future systems will mimic brain behavior
- Fast real-time processing on **massive amounts of data**
 - Three orders of magnitude **(x1000) better energy efficiency**

ReRAM-based architectures are central to the transformation of AI, bringing memory and compute together for faster, brain-like intelligence

Progress to Goals so Far in CY 2025

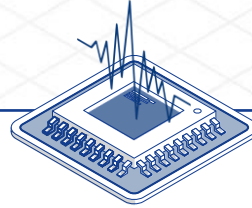
Goals stated at the 2024 AGM



Fabs

Three new
licensing
agreements

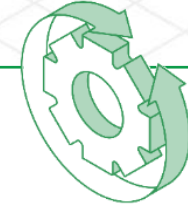
Expect 2/3*



Products

Three new
agreements with
product companies

Completed

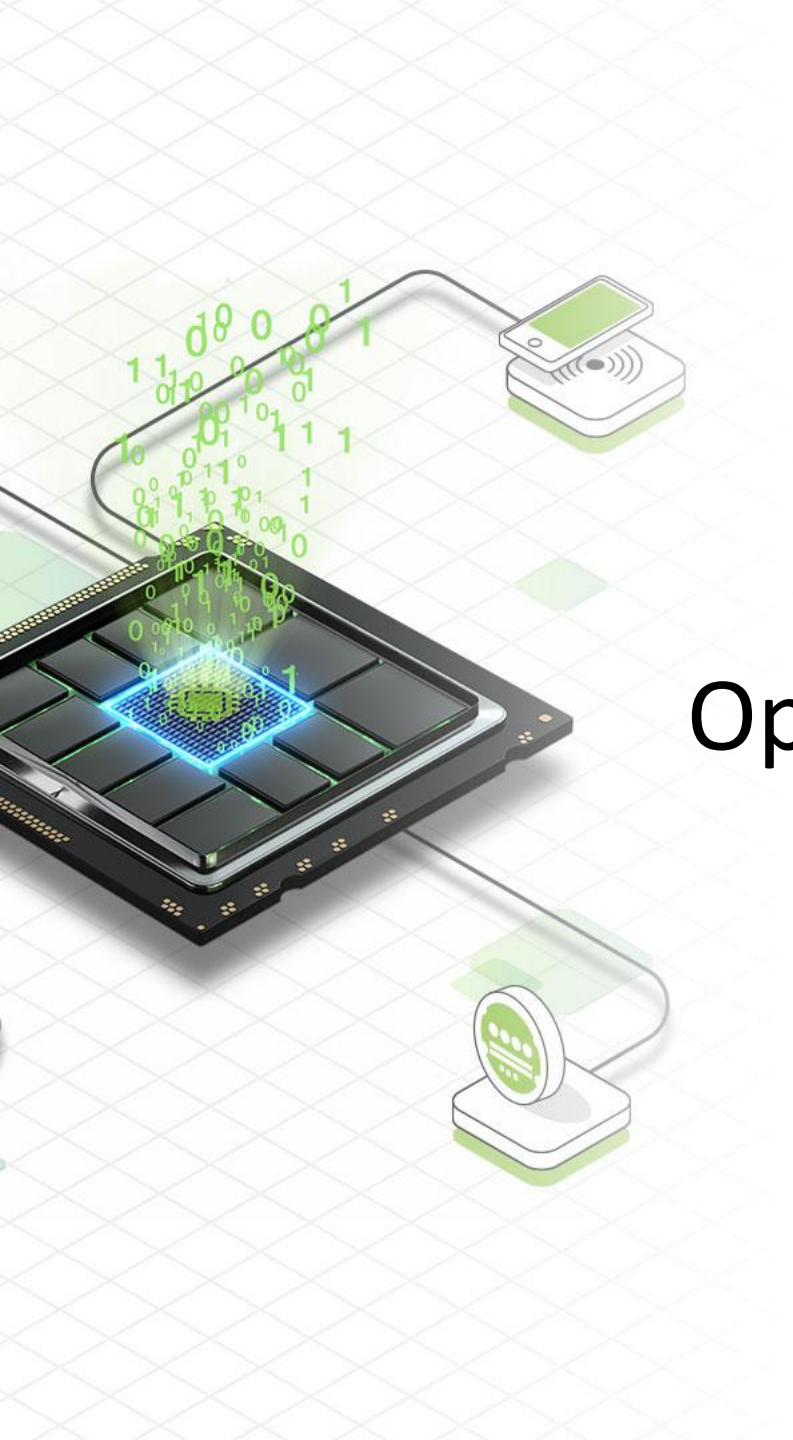


Qualification

Complete
qualification at
DB HiTek

On track

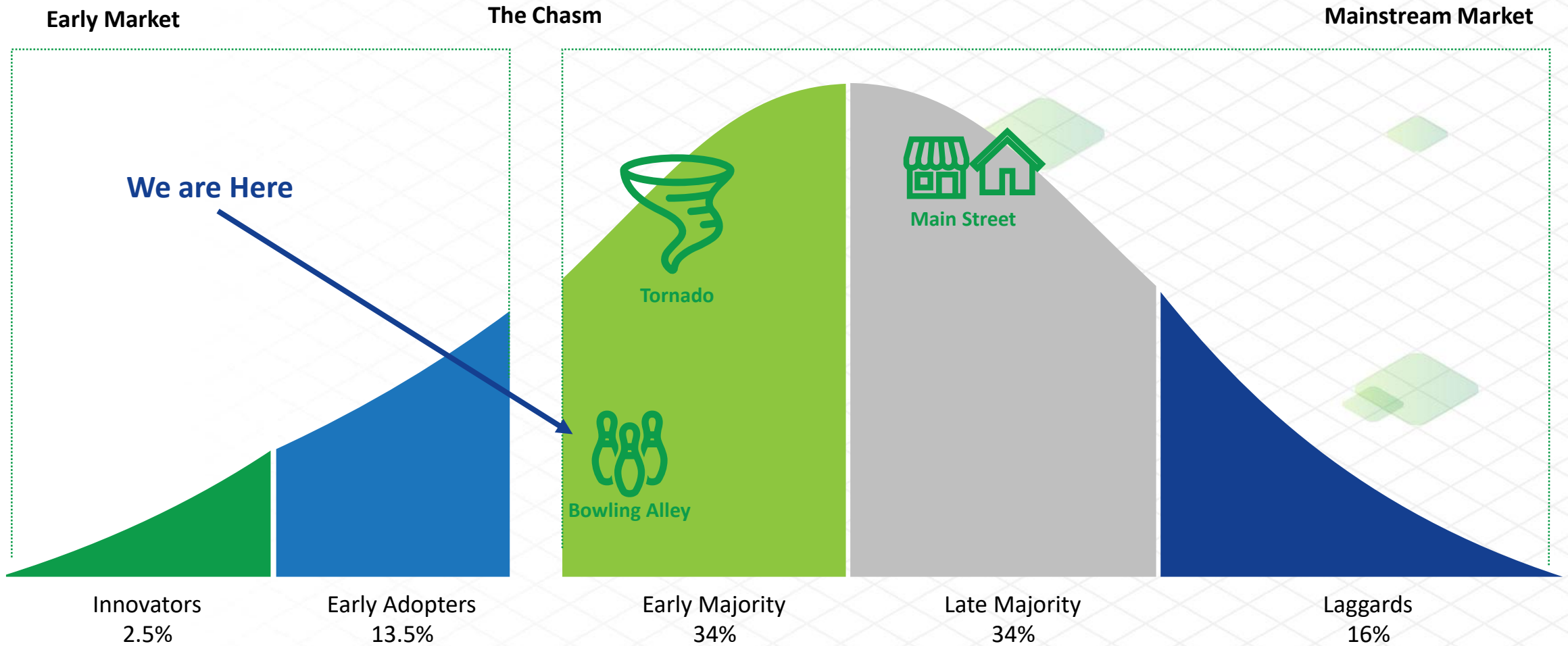
* onsemi was announced in Jan 2025. Weebit is now targeting another agreement in CY25 and one will slip to 2026.



Opportunities Ahead



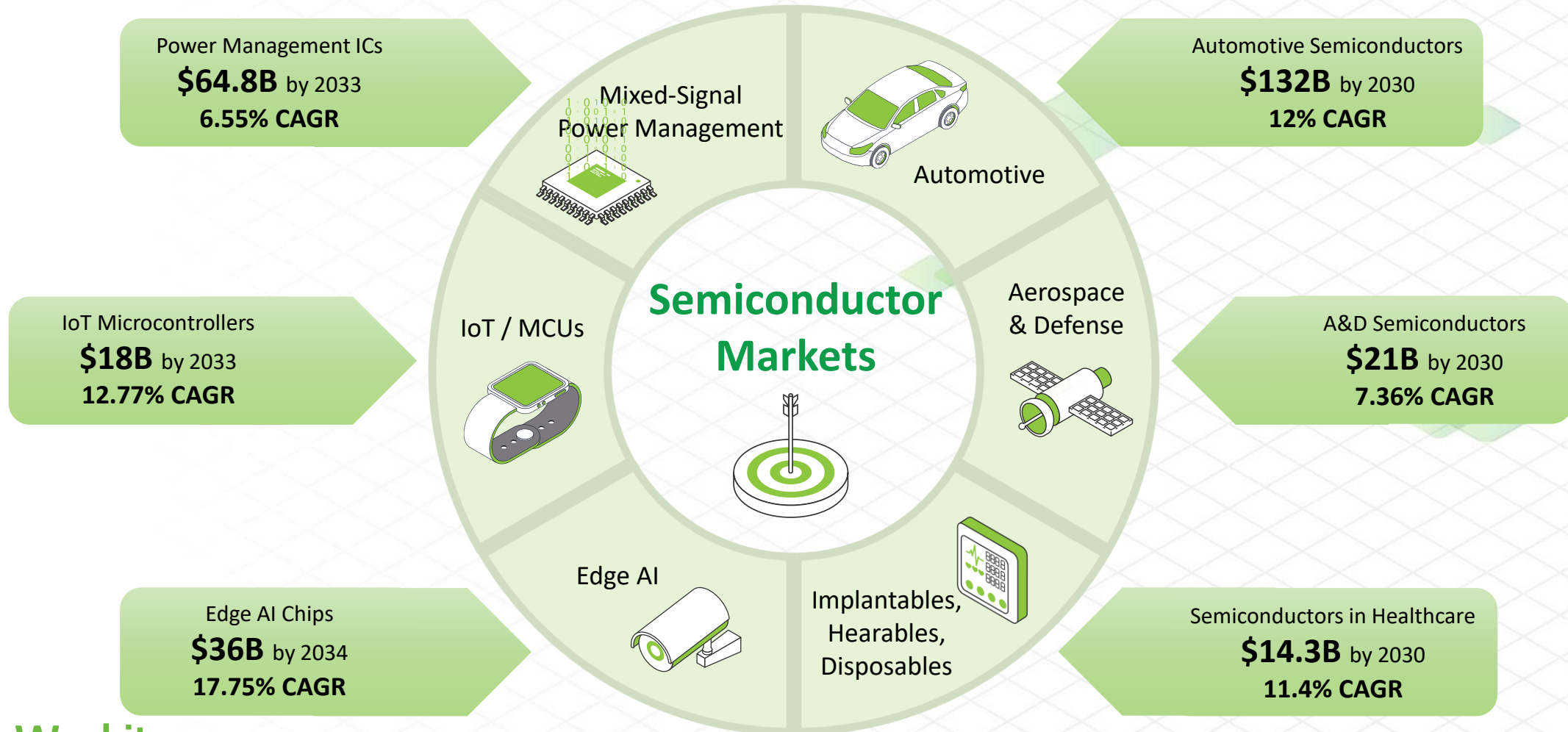
Heading for the Tornado



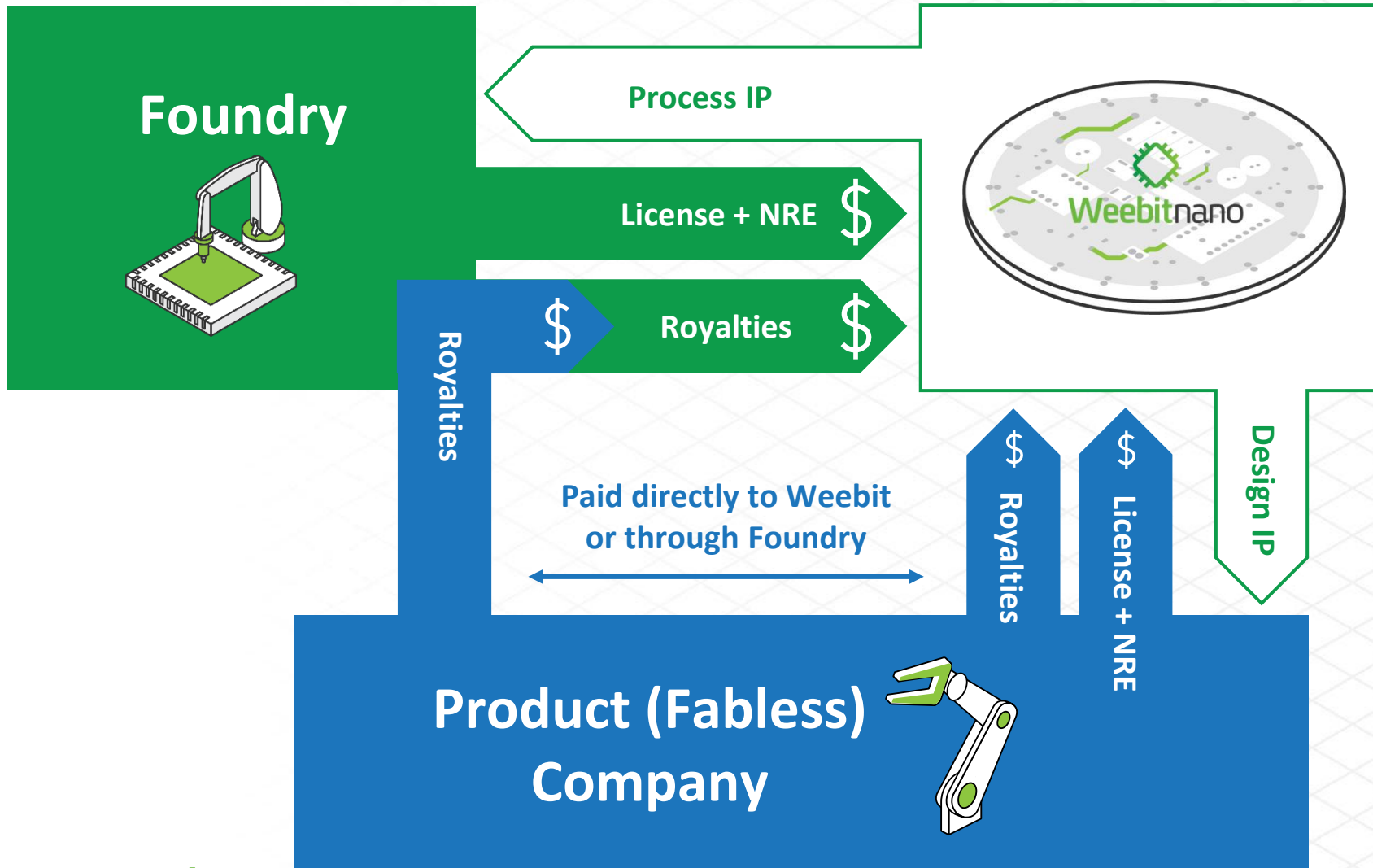
Foundation Diagram courtesy of <https://www.ignitionframework.com/crossing-the-chasm-theory-how-to-market-sell-and-improve-your-new-invention/>

Addressing Fast-Growing Semiconductor Markets

>US\$265 Billion TAM in Customer Markets



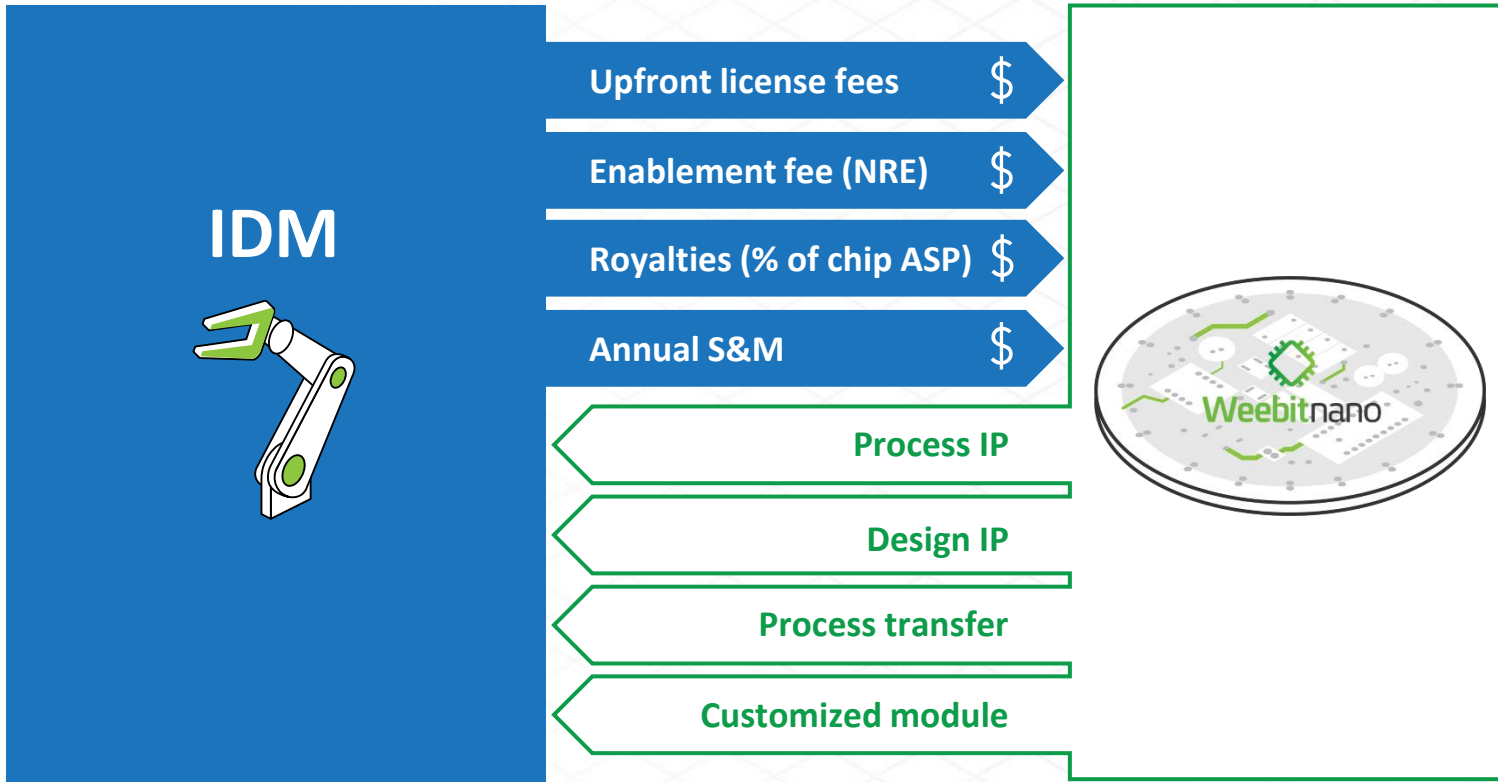
IP Business Model – Foundries & Fabless



Benefits of IP Model

- ❖ Low COGS
 - ◆ Direct costs are associated with supporting and maintaining IP
 - ◆ No inventory
- ❖ High gross and operating margins
 - ◆ Once IP is created, it gets sold multiple times
 - ◆ Royalties go directly to the bottom line

IP Business Model – Benefits with IDMs

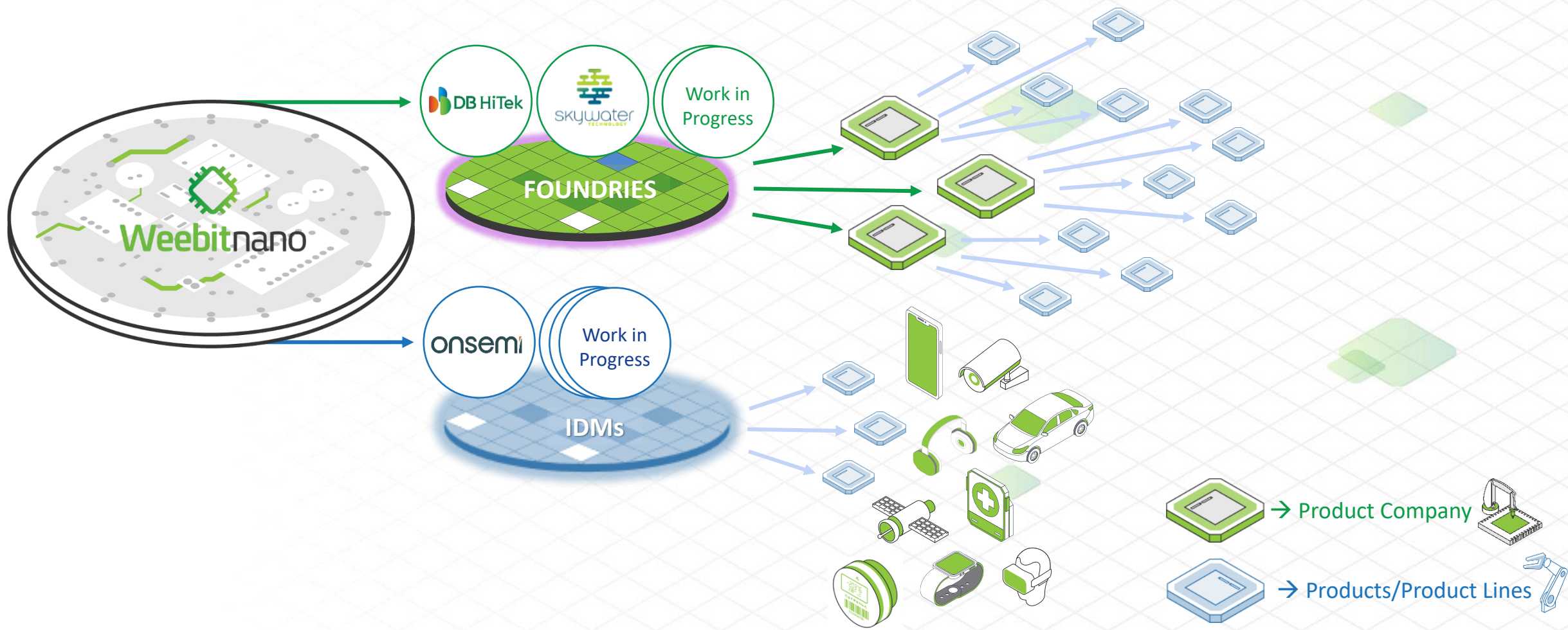


❖ IDMs design, manufacture and sell their own devices

- ◆ Develop products quickly for target end markets
- ◆ Can integrate IP in multiple designs / products

Accelerated
time-to-market and
time-to-revenue

Every Foundry Deal Represents Multiple Customer Opportunities



Foundations for Growth are in Place

Centralised project management and streamlined infrastructure;
Continuous improvements in cost-effectiveness and efficiency

Automation; enhanced tools,
procedures and methodologies

Sales team growth

New U.S. entity to support
customer engagements

Customer Success team/VP
Customer Success

Execution

Supporting multiple fab projects and growing number of product companies in parallel



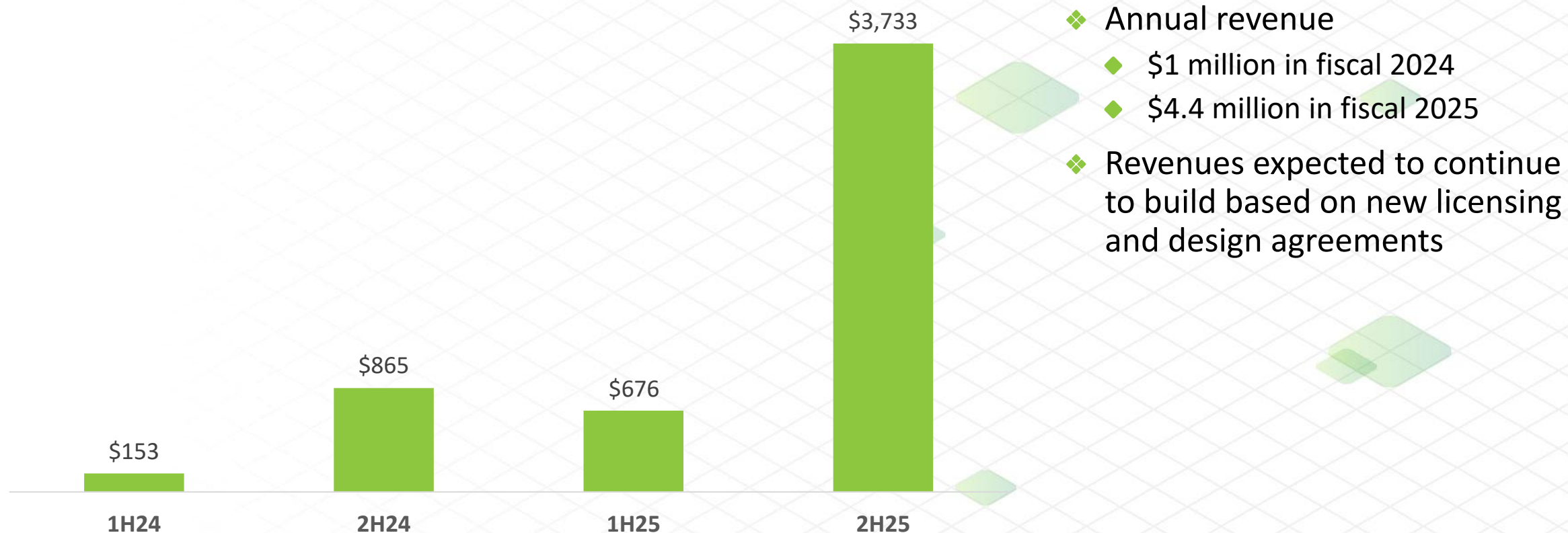
Financials

Alla Felder, CFO



Revenue Growth Accelerating

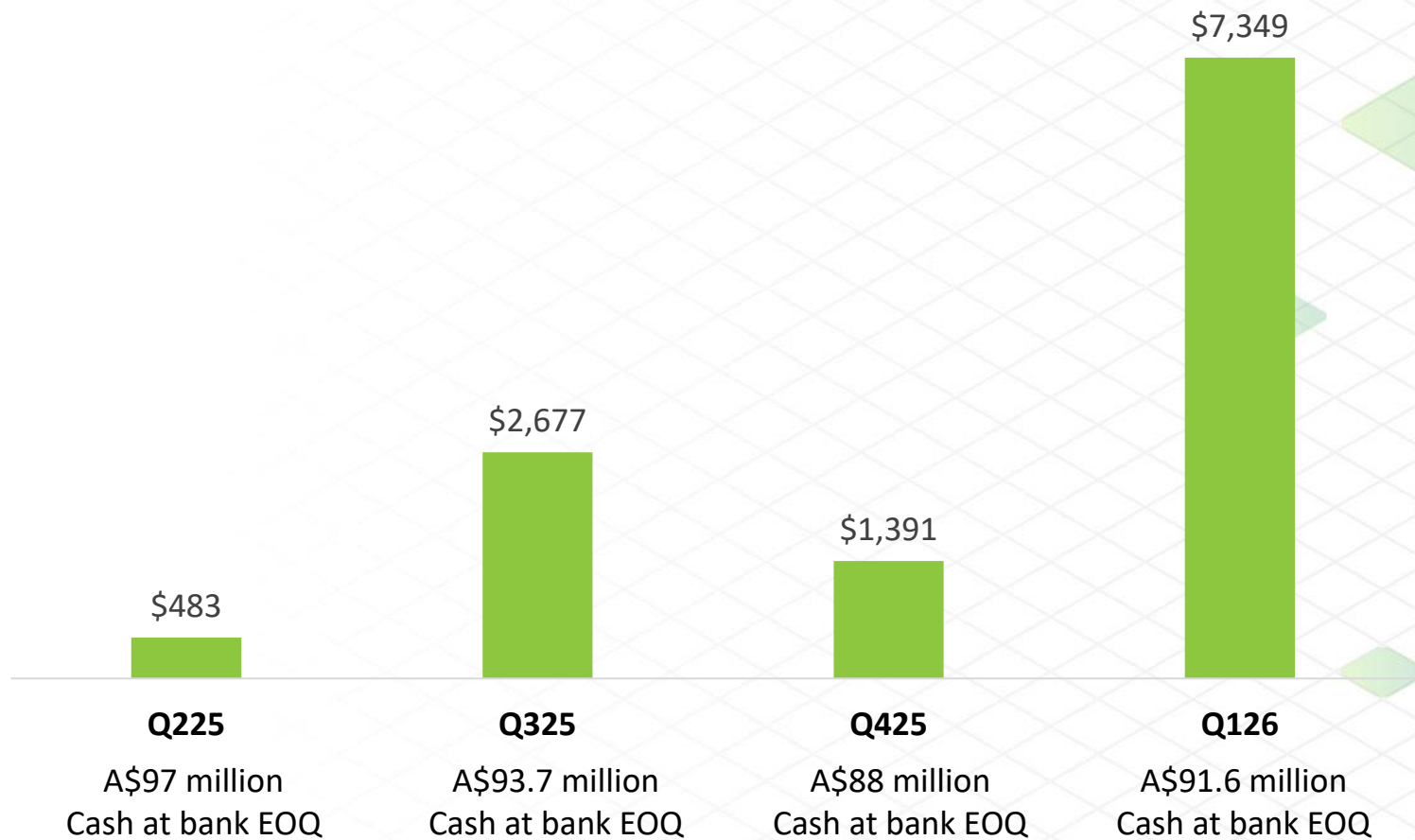
Half-Yearly (FY) Revenues (in A\$M)



Note: Past revenues and cash income do not necessarily reflect on the future

Record Customer Receipts

Quarterly (FY) Cash Flows (in \$A Thousands)

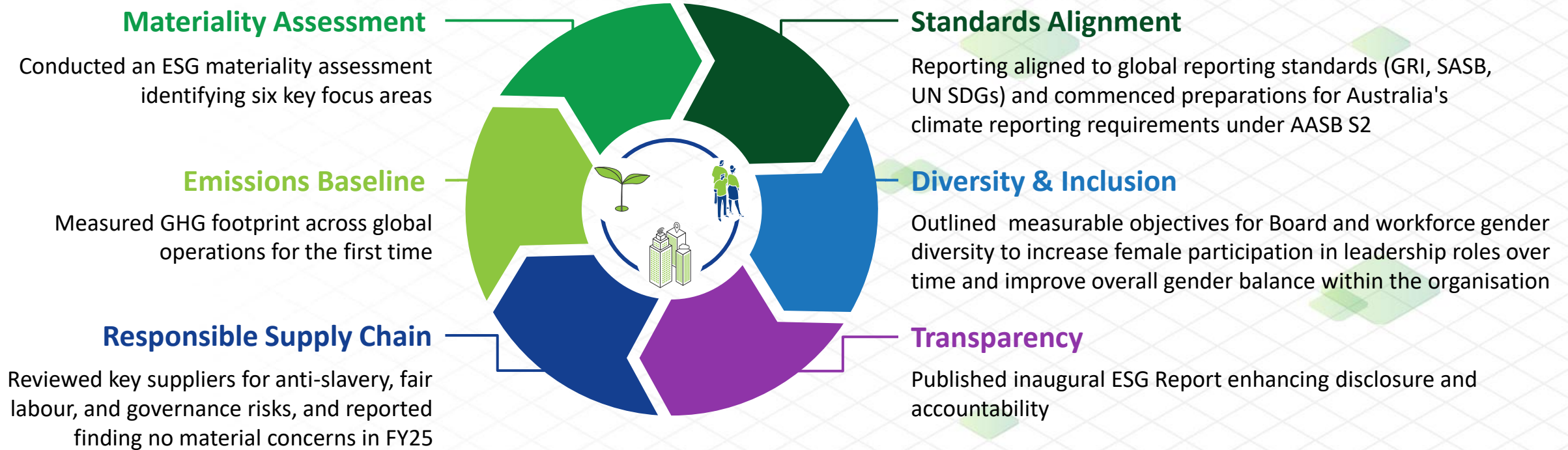


- ❖ Quarterly customer receipts represented a record A\$7.3 million in Q1 FY26
- ❖ Mainly milestone-based payments from existing customers
- ❖ Other notable cash inflows included A\$4.1 million relating to 2024 R&D tax rebate for Weebit's French subsidiary

Note: Past revenues and cash income do not necessarily reflect on the future

ESG Report Highlights

Progressed and formalised approach to ESG management and reporting



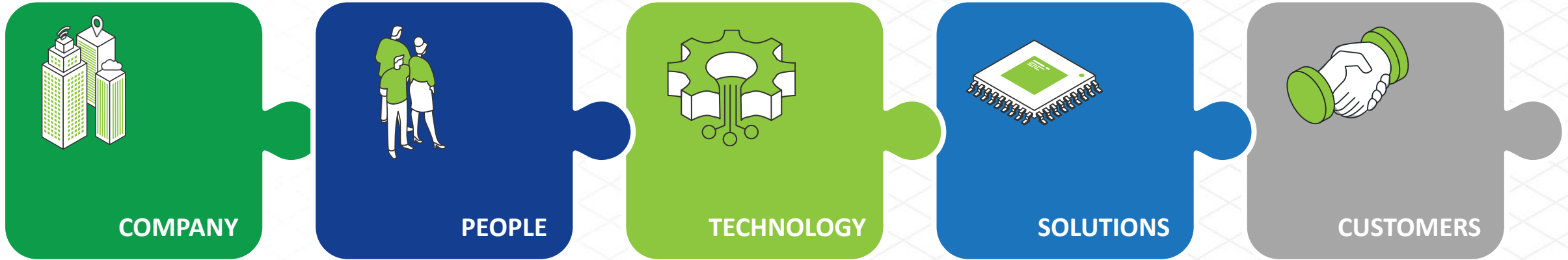


Looking Ahead


Coby Hanoch, CEO



Weebit's Differentiation



- Only **independent** provider of **qualified** ReRAM technology
- **ASX 300** (ASX:WBT)
- >A\$90M cash e/o 1Q FY26

- Located: Israel, France, US
- >60 personnel (~**90% engineers**; 17PhDs)
- R&D partner 
- Experienced management
- Continued scaling up of the team and required infrastructure

- Low-power, cost-effective, reliable NVM
- Scales where flash can't
- Targeting **fast-growing markets**: edge AI, automotive, power / analog ICs, MCUs, ...
- Qualified and ready for production

- Licensing **Semiconductor IP** for embedded markets
- Research towards **IMC and neuromorphic**
- Exploring solutions for future **discrete markets**
- Unrivalled design team delivers **high-quality IP**; enables **fast time-to-market** for customers

- **Multiple commercial deals**, including tier-1 IDM onsemi and top-10 foundry DB HiTek 
- Ongoing discussions and evals with **>20 vendors** (foundries, IDMs, product companies)
- **Several products in design** with Weebit ReRAM

WORLD-RENOWNED BOARD OF DIRECTORS



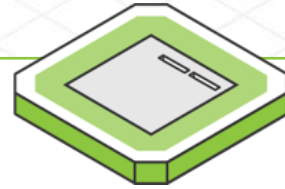
Weebit Nano Key Targets for CY 2026



Revenue

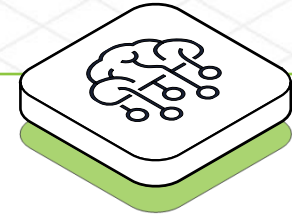
FY26 revenue goal
>\$10M*

- This represents Weebit's current goal FY26 revenue and is not a forecast.



Products

First product
company customer
tape-out



Customers

First AI customer
engagement

Delivering on these milestones will continue to cement Weebit's position as the leading independent provider of ReRAM technology

Disclaimer

This presentation contains certain statements that constitute forward-looking statements. Examples of such statements include, but are not limited to, statements regarding the design, scope, initiation, conduct and results of our research and development programs; our plans and objectives for future operations; and the potential benefits of our products and technologies. In some cases, forward-looking statements can be identified by the use of terminology such as “may,” “will,” “expects,” “plans,” “anticipates,” “estimates,” “potential” or “continue” or the negative thereof or other comparable terminology. These statements involve a number of risks and uncertainties that could cause actual results and the timing of events to differ materially from those anticipated by these forward-looking statements. These risks and uncertainties include a variety of factors, some of which are beyond our control. All forward-looking statements and reasons why actual results may differ are based on information available to us when initially made, and we assume no obligation to update these forward-looking statements or provide reasons why actual results might differ or the information set forth herein.

In addition, we do not make any representations or warranties, express or implied, with regard to the information included in this presentation of any other related document or information disclosed or furnished in connection thereto, including, without limitation, with respect to the accuracy, reliability, completeness or its sufficiency for any particular purpose. This information is proprietary and confidential of Weebit and is provided on a confidential basis and may not be disclosed or used without our prior written consent. You acknowledge that the disclosure and use of the information may be further prohibited under applicable securities or other laws.

This presentation is made for informational purposes only and does not constitute an offer to sell any interest in Weebit nor does it form the basis of any contract or agreement between the parties.

Third party data

This presentation includes or is otherwise based on information obtained from publicly available information including industry analyst firms and other information publicly released by corporations and government departments. Weebit has not independently verified or audited this information. Accordingly, the accuracy and completeness of such information is not guaranteed. This data has been accurately reproduced and, as far as Weebit is aware, no facts have been omitted that would render the information provided inaccurate or misleading. Investors should note that market data is inherently predictive and subject to uncertainty and is not necessarily reflective of actual market, industry and macroeconomic conditions. Specifically, there is no assurance that any of the forecasts or projections will be achieved. Forecasts and projections involve risks and uncertainties and are subject to change based on various factors, including those discussed above.

Thank You!

www.weebit-nano.com



 **Weebitnano**
THE NEXT NVM IS HERE